

Laser Beam Dump

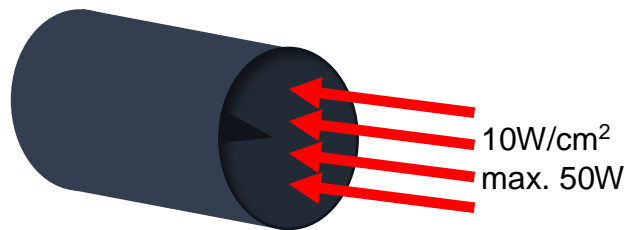
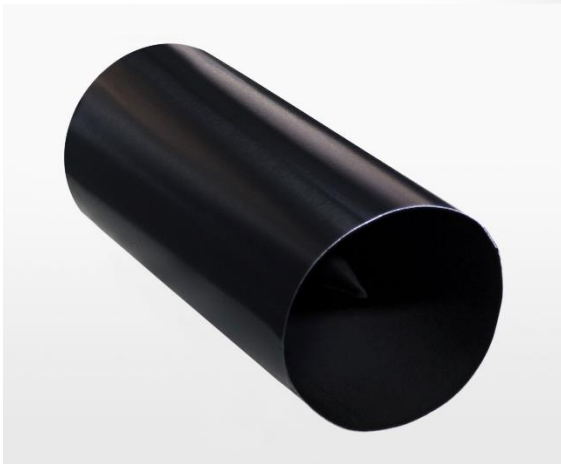
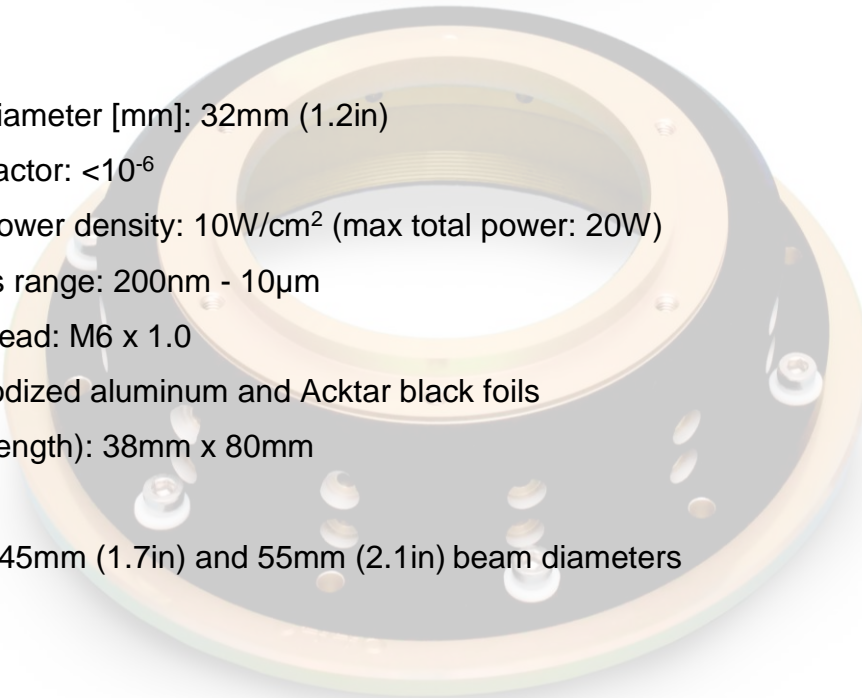
Product Description

LBD-T-32 – Tube Laser Beam Dump, 32mm Beam, 200nm - 10 μ m

Specifications

- ❖ Max beam diameter [mm]: 32mm (1.2in)
- ❖ Reflectivity factor: $<10^{-6}$
- ❖ Max beam power density: 10W/cm² (max total power: 20W)
- ❖ Wavelengths range: 200nm - 10 μ m
- ❖ Mounting thread: M6 x 1.0
- ❖ Material: anodized aluminum and Acktar black foils
- ❖ Size (dia. x length): 38mm x 80mm

* Available also for 45mm (1.7in) and 55mm (2.1in) beam diameters



Acktar Ltd.