

Laser Beam Dump

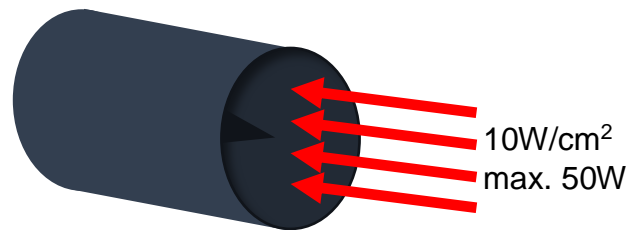
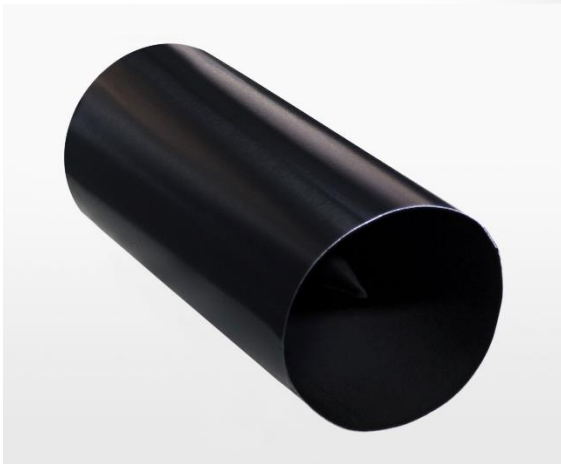
Product Description

LBD-T-45 – Tube Laser Beam Dump, 45mm Beam, 200nm - 10 μ m

Specifications

- ❖ Max beam diameter [mm]: 45mm (1.7in)
- ❖ Reflectivity factor: $<10^{-6}$
- ❖ Max beam power density: 10W/cm² (max total power: 50W)
- ❖ Wavelengths range: 200nm - 10 μ m
- ❖ Mounting thread: M6 x 1.0
- ❖ Material: anodized aluminum and Acktar black foils
- ❖ Size (dia. x length): 50mm x 90mm

* Available also for 32mm (1.2in) and 55mm (2.1in) beam diameters



Acktar Ltd.