

Laser Beam Dump

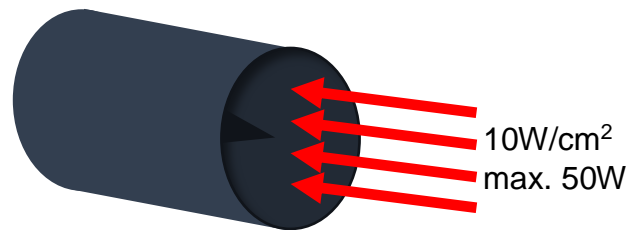
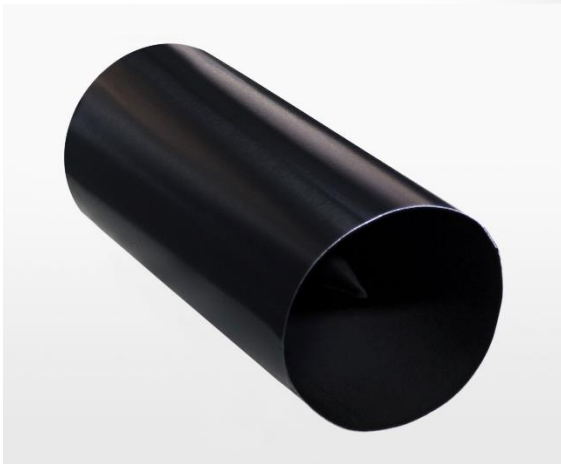
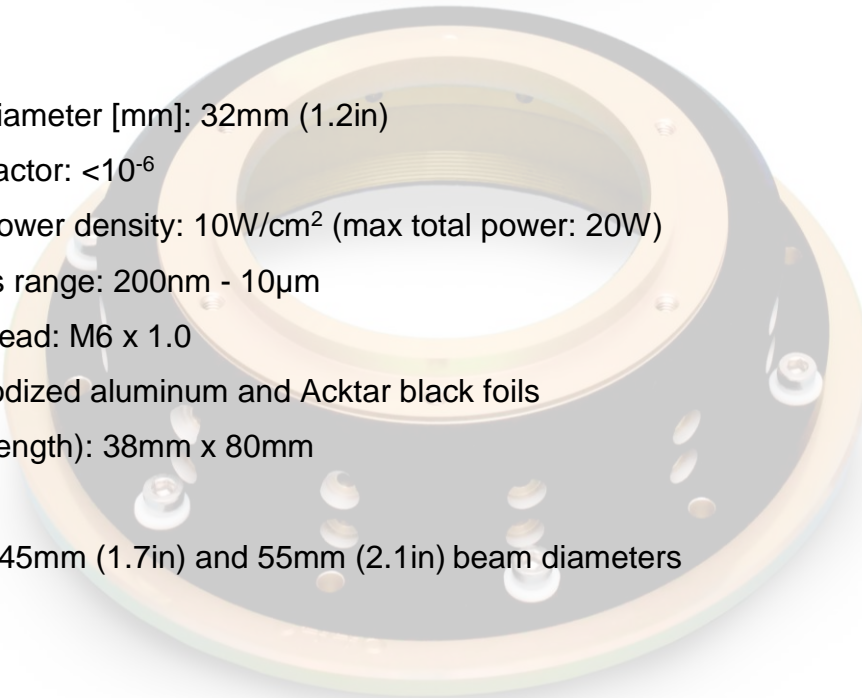
Product Description

LBD-T-32 – Tube Laser Beam Dump, 32mm Beam, 200nm - 10 μ m

Specifications

- ❖ Max beam diameter [mm]: 32mm (1.2in)
- ❖ Reflectivity factor: $<10^{-6}$
- ❖ Max beam power density: 10W/cm² (max total power: 20W)
- ❖ Wavelengths range: 200nm - 10 μ m
- ❖ Mounting thread: M6 x 1.0
- ❖ Material: anodized aluminum and Acktar black foils
- ❖ Size (dia. x length): 38mm x 80mm

* Available also for 45mm (1.7in) and 55mm (2.1in) beam diameters



Acktar Ltd.

Laser Beam Dump

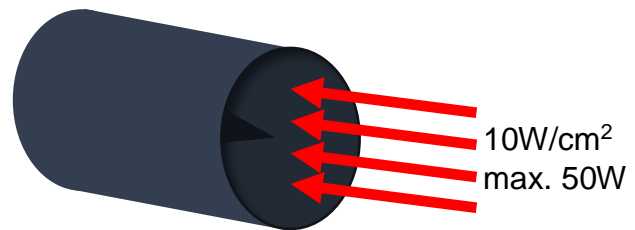
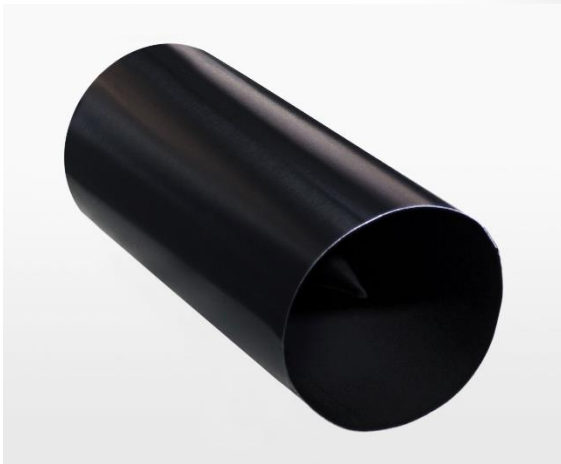
Product Description

LBD-T-45 – Tube Laser Beam Dump, 45mm Beam, 200nm - 10 μ m

Specifications

- ❖ Max beam diameter [mm]: 45mm (1.7in)
- ❖ Reflectivity factor: $<10^{-6}$
- ❖ Max beam power density: 10W/cm² (max total power: 50W)
- ❖ Wavelengths range: 200nm - 10 μ m
- ❖ Mounting thread: M6 x 1.0
- ❖ Material: anodized aluminum and Acktar black foils
- ❖ Size (dia. x length): 50mm x 90mm

* Available also for 32mm (1.2in) and 55mm (2.1in) beam diameters



Acktar Ltd.

Head Office: 19 Topaz St. P.O. Box 8643 Kiryat-Gat, Israel 8258401
Tel: +972-08-6814213 Fax: +972-08-6810198 <http://www.acktar.com>

Laser Beam Dump

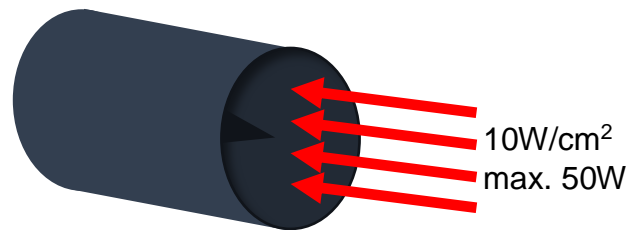
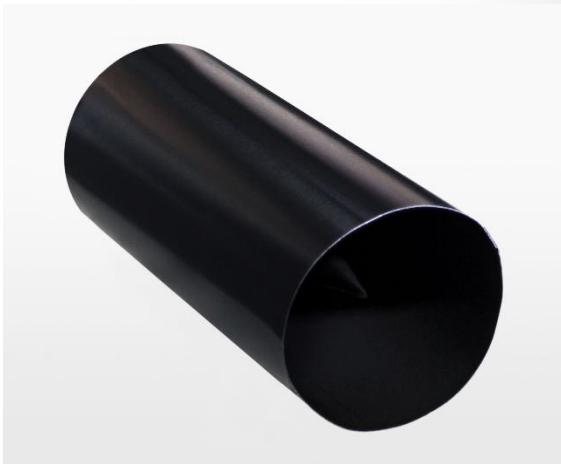
Product Description

LBD-T-55 – Tube Laser Beam Dump, 55mm Beam, 200nm - 10 μ m

Specifications

- ❖ Max beam diameter [mm]: 55mm (2.1in)
- ❖ Reflectivity factor: $<10^{-6}$
- ❖ Max beam power density: 10W/cm² (max total power: 50W)
- ❖ Wavelengths range: 200nm - 10 μ m
- ❖ Mounting thread: M6 x 1.0
- ❖ Material: anodized aluminum and Acktar black foils
- ❖ Size (dia. x length): 65mm x 112mm

* Available also for 32mm (1.2in) and 45mm (1.7in) beam diameters



Acktar Ltd.

Head Office: 19 Topaz St. P.O. Box 8643 Kiryat-Gat, Israel 8258401
Tel: +972-08-6814213 Fax: +972-08-6810198 <http://www.acktar.com>

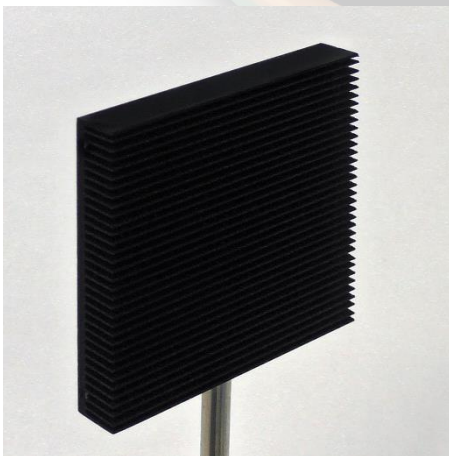
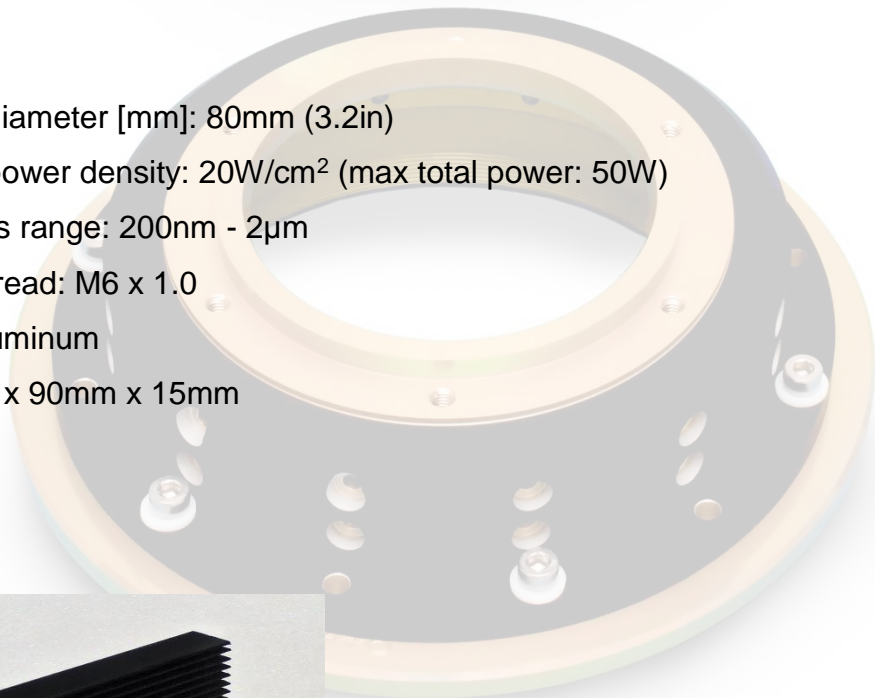
Laser Beam Dump

Product Description

LBD-F-80 – Flat Laser Beam Dump, 80mm Beam, 200nm - 2 μ m

Specifications

- ❖ Max beam diameter [mm]: 80mm (3.2in)
- ❖ Max beam power density: 20W/cm² (max total power: 50W)
- ❖ Wavelengths range: 200nm - 2 μ m
- ❖ Mounting thread: M6 x 1.0
- ❖ Material: Aluminum
- ❖ Size: 90mm x 90mm x 15mm



20W/cm²
max. 50W

Acktar Ltd.

Head Office: 19 Topaz St. P.O. Box 8643 Kiryat-Gat, Israel 8258401
Tel: +972-08-6814213 Fax: +972-08-6810198 <http://www.acktar.com>